

# Velluto

## GORGEOUS



### CARATTERISTICHE / FEATURES



SCHEDA TECNICA / TECHNICAL DETAILS	UNITÀ / UNIT	NORMA / TEST METHOD	VALORI / LIMIT VALUE
Peso / Weight	g/m <sup>2</sup>	-	450
Altezza / Width	cm	-	140
Composizione velluto / Piled surface composition	-	-	100% TREVIRA® CS
Composizione retrostruttura / Back fabric composition	-	-	100% PES FR
Pelosità superficiale e pilling / Fuzzing and pilling test	-	UNI EN ISO 12945-2	5
Resistenza all'abrasione / Abrasion resistance (Martindale)	cicli/cycles	UNI EN ISO 12947-2	100.000
Resistenza alla trazione / Tensile strength	N	EN ISO 13934-1	ordito/warp 400 trama/weft 400
Resistenza alla lacerazione / Tear strength	N	UNI EN ISO 13937-3	ordito/warp 48 trama/weft 32
Solidità colori allo sfregamento a secco / Colour fastness to dry rubbing	grey scale	UNI EN ISO 105-X12	4
Solidità colori allo sfregamento a umido / Colour fastness to wet rubbing	grey scale	UNI EN ISO 105-X12	4
Solidità colori alla luce / Colour fastness to light (Xenotest)	blue scale	UNI EN ISO 105-Bo2	≥5

**RESISTENZA AL FUOCO**  
FIRE RESISTANCE

UNI 8456 - 974 classe 1  
UNI 9175 classe IIM  
EN 1021-1  
EN 1021-2  
BS 5892 crib 5  
DIN 4102 B1  
NF P 92 503-507 M1  
IMO FTP CODE 2010





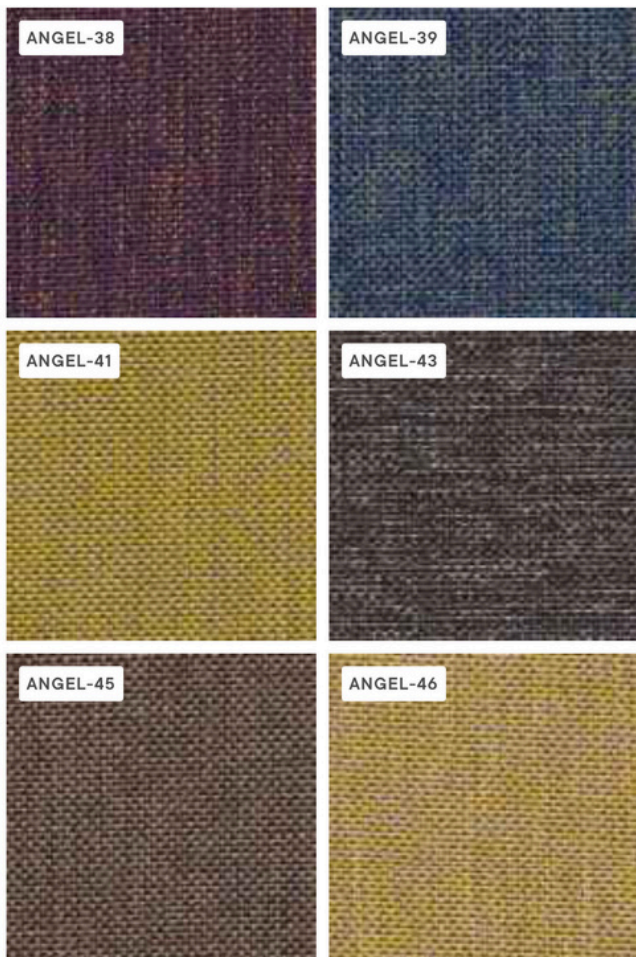
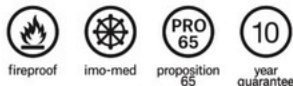
# Tessuto ANGEL

## angel 08012



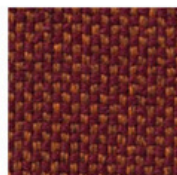
**IT**  
**codice doganale**  
 54072011.  
**utilizzo**  
 tende, imbottiti.  
**caratteristiche**  
 100% polipropilene, altezza cm ± 140, peso ± 228 gr/m<sup>2</sup>.  
**tintura**  
 il prodotto è tinto in massa.  
**lunghezza pezzi**  
 circa 35 mt., disponibile anche al taglio con maggiorazione.  
**abrasione**  
 > 100.000 cicli, ISO 12947-2.  
**solidità alla luce**  
 5/6, ISO 105 B02.  
**solidità allo sfregamento**  
 secco 5, umido 4/5, ISO 105 X12.  
**resistenza alla cucitura**  
 ordito 3 mm, trama 4 mm, ISO 13936-2.  
**pilling**  
 5, ISO 12945-2.  
**resistenza al fuoco**  
 1IM - UNI 9175; EN 1021 part 1/2;  
 BS 5852 crib 5; NFPA 260 Class 1;  
 California TB 117:2013;  
 IMO MED - FTP Code 307 part 8.  
**attenzione**  
 sono ammesse leggere differenze di colore tra differenti partite, non ci assumiamo nessuna responsabilità per il trasferimento di colore/pigmenti causato da abbigliamento e accessori, consigliamo di verificare le schede tecniche di tutti i prodotti su [www.abitex.eu](http://www.abitex.eu)

**EN**  
**customs code**  
 54072011.  
**use**  
 curtains, upholstered furniture.  
**features**  
 100% polypropylene, width cm ± 140, weight ± 228 g/m<sup>2</sup>.  
**dyeing**  
 solution dyed product.  
**roll length**  
 approx. 35 lm., can also be cut-to-length at an extra cost.  
**abrasion resistance**  
 > 100.000 rubs, ISO 12947-2.  
**colour fastness to light**  
 5/6, ISO 105 B02.  
**fastness to rubbing**  
 dry 5, wet 4/5, ISO 105 X12.  
**seam slippage**  
 warp 3 mm, weft 4 mm, ISO 13936-2.  
**pilling**  
 5, ISO 12945-2.  
**fire resistance**  
 1IM - UNI 9175; EN 1021 part 1/2;  
 BS 5852 crib 5; NFPA 260 Class 1;  
 California TB 117:2013;  
 IMO MED - FTP Code 307 part 8.  
**attention**  
 slight colour differences between different batches are allowed we assume no responsibility for the transfer of colour/pigment caused by clothing and accessories, please check the technical data sheets of all products on the [abitex website](http://www.abitex.eu)

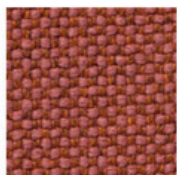




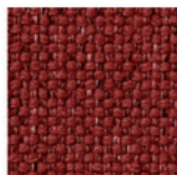
# Tessuto ACTON



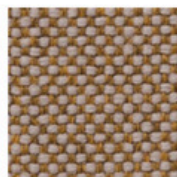
7062.01



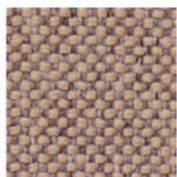
7062.02



7062.03



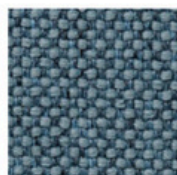
7062.10



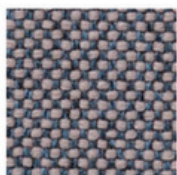
7062.11



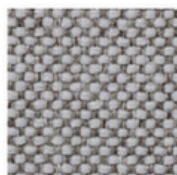
7062.12



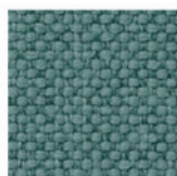
7062.19



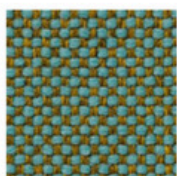
7062.20



7062.21



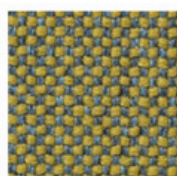
7062.28



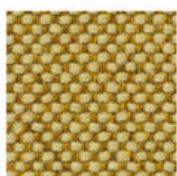
7062.29



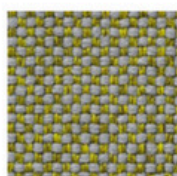
7062.30



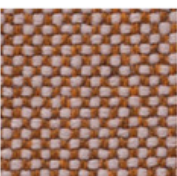
7062.37



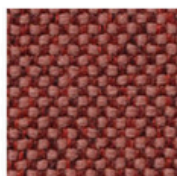
7062.38



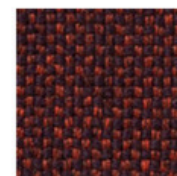
7062.39



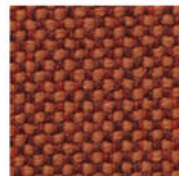
7062.04



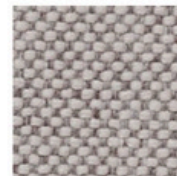
7062.05



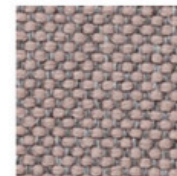
7062.06



7062.07



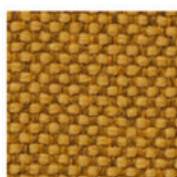
7062.08



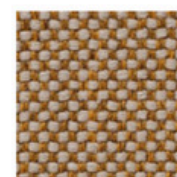
7062.09



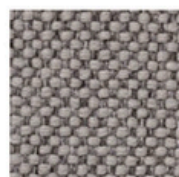
7062.13



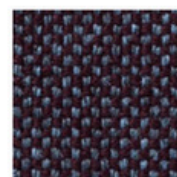
7062.14



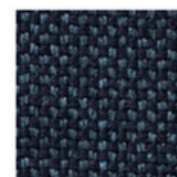
7062.15



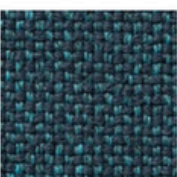
7062.16



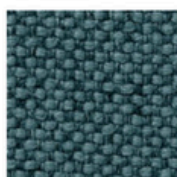
7062.17



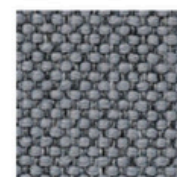
7062.18



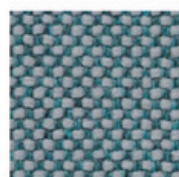
7062.22



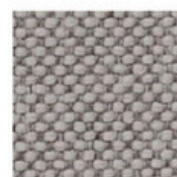
7062.23



7062.24



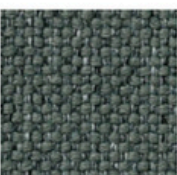
7062.25



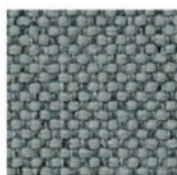
7062.26



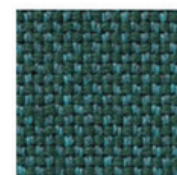
7062.27



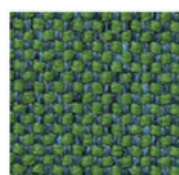
7062.31



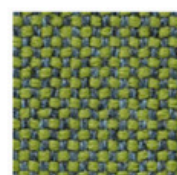
7062.32



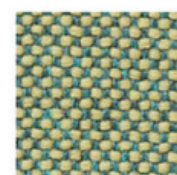
7062.33



7062.34



7062.35



7062.36

binder  
upholstery 01

composizione  
100% poliestere con trattamento antifiama

altezza  
± 141 cm, ± 56 inches

peso  
± 605 gr/m<sup>2</sup>, ± 20 oz/yd<sup>2</sup> fabrics

resistenza al fuoco  
EN 1021 / 1-2  
BS 5852, crib 5  
NF P 92 / 503 - 507, M1  
DIN 4102, B1  
UNI 9175, classe 1.IM  
Cal TB 117  
NFPA 260, class 1  
IMO 2010 FTP part 8

resistenza all'abrasione  
ISO 12947-2  
90.000 rubs martindale  
ASTM D4157  
100.000 double rubs wyzenbeek

resistenza al pilling  
ISO 12945-2  
4 (scala 1-5)  
ASTM D3511  
5 (scala 1-5)

solidità allo sfregamento  
ISO 105-X12  
bagnato 4-5 / asciutto 4-5 (scala 1-5)  
AATCC 8  
bagnato 5 / asciutto 5 (scala 1-5)

resistenza alla luce  
ISO 105-B02  
6 (scala 1-8)  
AATCC 16.3: 40 hours  
4 (scala 1-5)

resistenza al taglio cucitura  
ISO 13936 - 2  
catena 3.7 mm / trama 3.7 mm  
ASTM D4034  
catena 109 lbs / trama 86 lbs

resistenza alla trazione  
ISO 13934-1  
warp 1380 N / weft 1790 N  
ASTM D5034  
warp 263 lbs / weft 345 lbs

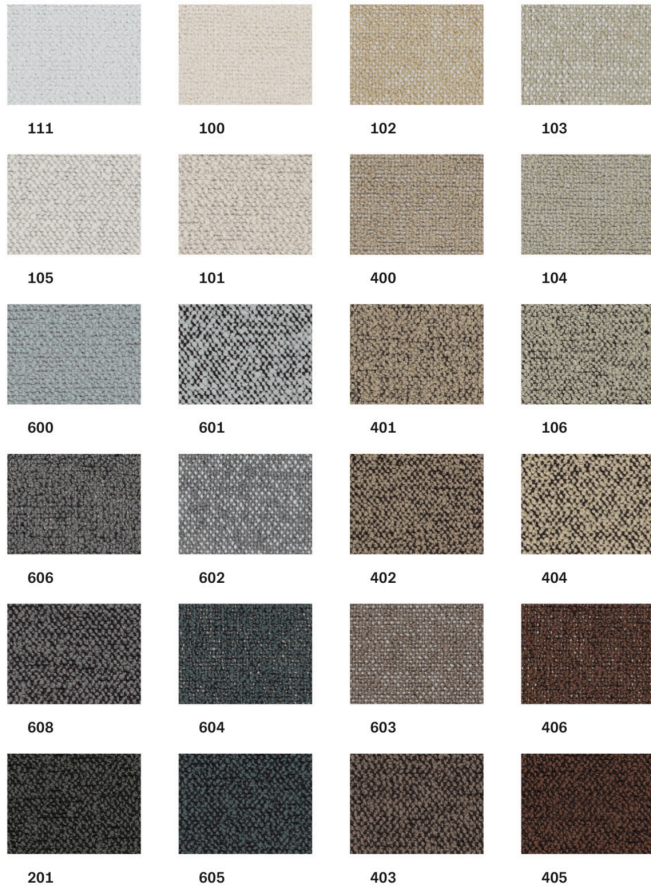
manutenzione  


restringimento: catena -2.7% / trama -0.6%



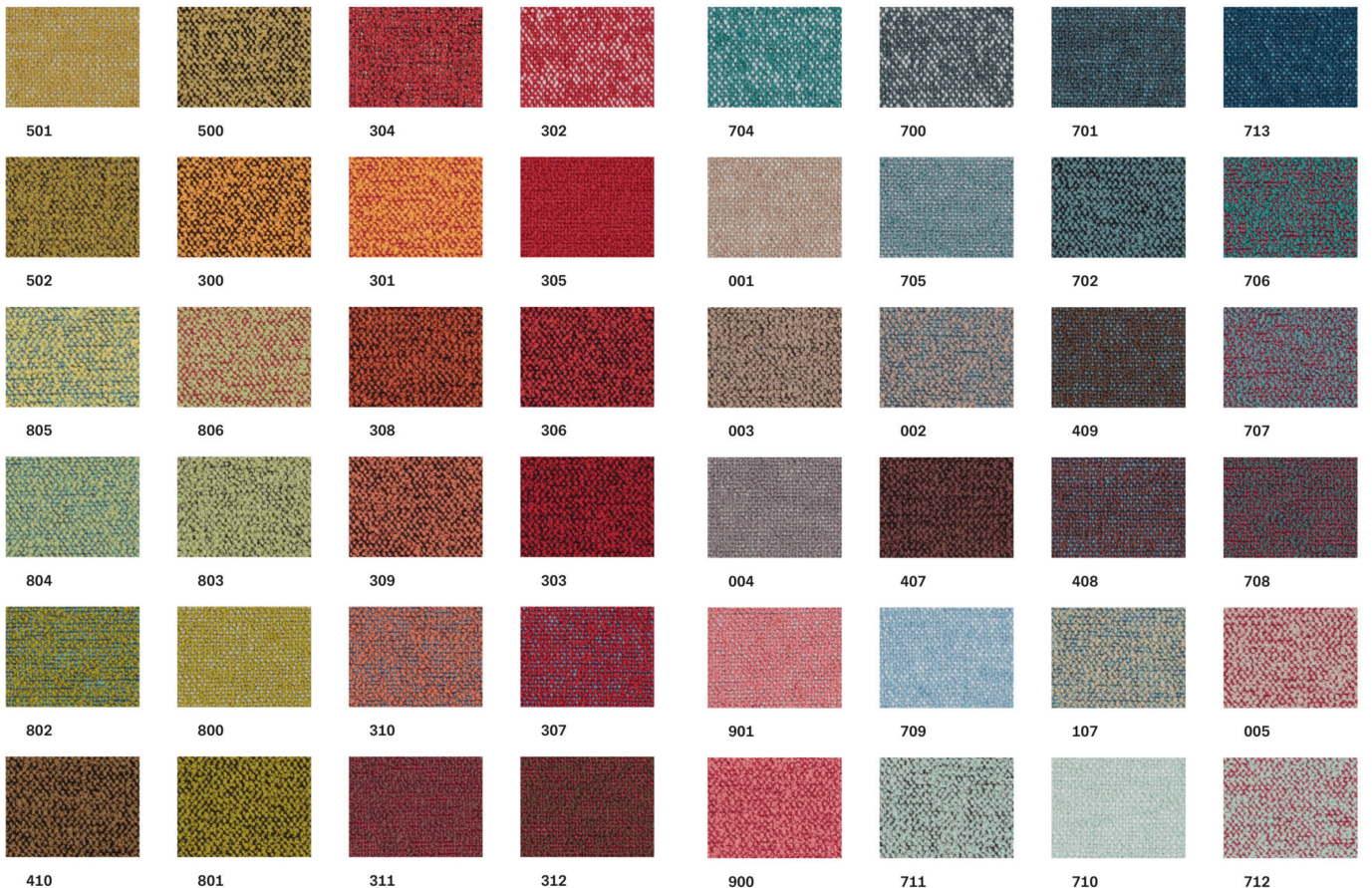
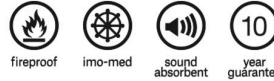
# Tessuto GRISÙ

## grisù 04038

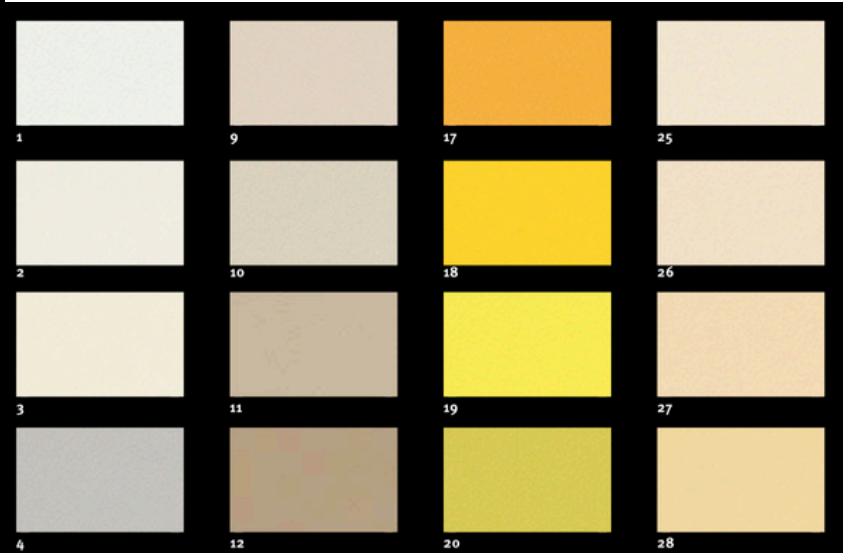
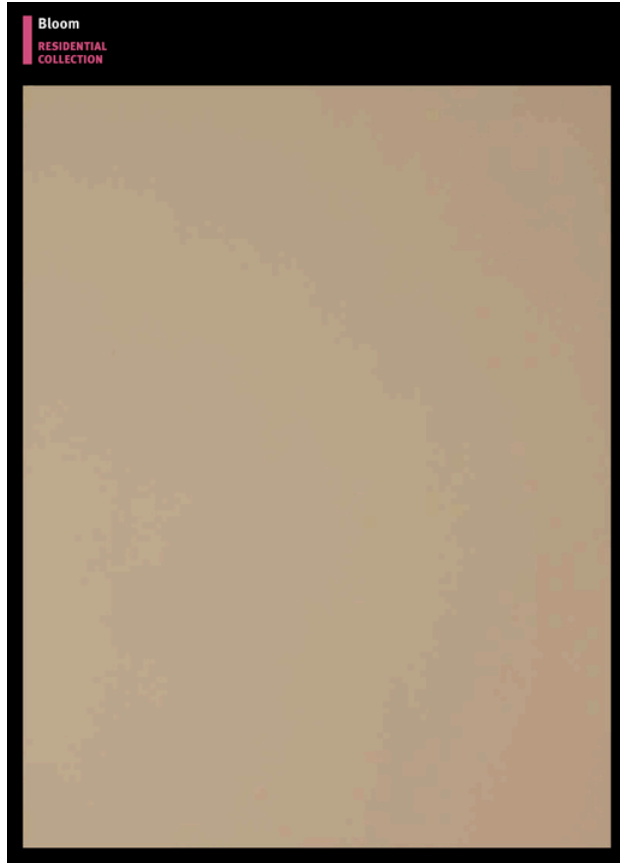


**IT**  
**codice doganale**  
54072011.  
**utilizzo**  
tende, imbottiti, assorbimento acustico.  
**caratteristiche**  
68% poliestere - 32% polipropilene, altezza cm ± 140, peso ± 400 g/m<sup>2</sup>.  
**tintura**  
il prodotto è tinto in massa, il prodotto è tinto in filo.  
**lunghezza pezze**  
circa 35 mt., disponibile anche al taglio con maggiorazione.  
**abrasione**  
> 135.000 cicli, ISO 12947-2.  
**solidità alla luce**  
> 6, ISO 105 B02.  
**solidità allo sfregamento**  
secco 4/5, umido 4, ISO 105 X12.  
**resistenza alla cucitura**  
ordito 3 mm, trama 3 mm, ISO 13936-2.  
**pilling**  
4/5, ISO 12945-2.  
**assorbimento acustico**  
αw 0,75 ariccato; αw 0,60 teso;  
ISO 354 - allestimento G.  
**resistenza al fuoco**  
1IM - UNI 9175; classe 1 - UNI 9177; EN 1021 1/2;  
NF D 60 013 (AM 18); DIN 4102 B1; NFPA 260 Class 1;  
California TB 117-2013; IMO MED 3.20 - FTP Code 307 part 8;  
ONORM B 3825.  
**resistenza al fuoco, solo su richiesta con trattamento**  
BS 5852 crib 5.  
**attenzione**  
sono ammesse leggere differenze di colore tra differenti partite, consigliamo di verificare le schede tecniche di tutti i prodotti su [www.abitex.eu](http://www.abitex.eu)

**EN**  
**customs code**  
54072011.  
**use**  
curtains, upholstered furniture, sound absorption.  
**features**  
68% polyester - 32% polypropylene, width cm ± 140, weight ± 400 g/m<sup>2</sup>.  
**dyeing**  
solution dyed product, yarn dyed product.  
**roll length**  
approx. 35 m., can also be cut-to-length at an extra cost.  
**abrasion resistance**  
> 135.000 rubs, ISO 12947-2.  
**colour fastness to light**  
> 6, ISO 105 B02.  
**fastness to rubbing**  
dry 4/5, wet 4, ISO 105 X12.  
**seam slippage**  
warp 3 mm, weft 3 mm, ISO 13936-2.  
**pilling**  
4/5, ISO 12945-2.  
**sound absorption**  
αw 0,75 folded; αw 0,60 not folded;  
ISO 354 - G type.  
**fire resistance**  
1IM - UNI 9175; classe 1 - UNI 9177; EN 1021 1/2;  
NF D 60 013 (AM 18); DIN 4102 B1; NFPA 260 Class 1;  
California TB 117-2013; IMO MED 3.20 - FTP Code 307 part 8;  
ONORM B 3825.  
**fire resistance, only on request with treatment**  
BS 5852 crib 5.  
**attention**  
slight colour differences between different batches are allowed; please check the technical data sheets of all products on the [abitex website www.abitex.eu](http://www.abitex.eu)



# Ecopelle BLOOM



**CARATTERISTICHE / FEATURES**

PHOSPHATE FREE  
HALOGEN FREE

SCHEDA TECNICA / TECHNICAL DETAILS	UNITÀ / UNIT	NORMA / TEST METHOD	VALORI / LIMIT VALUE
Peso / Weight	g/m <sup>2</sup>	-	550
Altezza / Width	cm	-	140
Composizione / Composition	-	-	85% PVC - 15% PES
Resistenza all'abrasione / Abrasion resistance (Martindale)	cicli/cycles	UNI EN ISO 12947-2	50.000
Adesione / Adhesion	N/50 mm	UNI 2411	long: 65 short: 55
Allungamento a rottura / Elongation at break	%	UNI EN ISO 1421	long: 113 short: 85
Resistenza alla lacerazione / Tear strenght	N	UNI 4818-9	long: 300 short: 127
Solidità colori allo sfregamento a secco / Colour fastness to dry rubbing	grey scale	UNI EN ISO 105-X12	5
Solidità colori allo sfregamento a umido / Colour fastness to wet rubbing	grey scale	UNI EN ISO 105-X12	5
Solidità colori alla luce / Colour fastness to light (Xenotest)	blue scale	UNI EN ISO 105-B02	6

**NORME DI PULIZIA** - Per le istruzioni dettagliate di lavaggio e manutenzione del tessuto e per saperne di più visitate il sito [www.balocco.it](http://www.balocco.it)  
**CLEANING INSTRUCTIONS** - Check our website [www.balocco.it](http://www.balocco.it) for detailed washing and maintenance instructions related to the fabric and to know the most suitable cleaning products.





# Ecopelle vintage CRAZY

CARATTERISTICHE TECNICHE TECHNICAL DETAILS	UNITÀ UNIT	NORMA TEST METHOD	VALORI LIMIT VALUE
Peso Weight	g/m <sup>2</sup>	-	600
Altezza Width	cm	-	140
Composizione Composition	-	-	80% PVC - 2% PU 18% PES
Resistenza all'abrasione Abrasion resistance	cicli/cycles	EN ISO 5470-2	50.000
Solidità colori allo sfregamento a secco Colour fastness to dry rubbing	-	UNI EN ISO 105-X12	4/5
Solidità colori allo sfregamento a umido Colour fastness to wet rubbing	-	UNI EN ISO 105-X12	4/5
Adesione Adhesion	N	UNI EN ISO 2411	35
Resistenza alle flessioni Bending strenght	cicli/cycles	UNI 4818-13	150.000
Resistenza alla trazione Tensile strenght	N	UNI EN ISO 1421	long. 515 trasv. 300

 **COMFORT ED ELASTICITÀ**  
COMFORT AND ELASTICITY

 **RESISTENZA ALLA LACERAZIONE**  
TEAR STRENGHT

 **FACILE MANUTENZIONE**  
EASY TO CLEAN

 **IMPERMEABILITÀ**  
WATERPROOF

 **RESISTENZA AL FUOCO**  
FIRE RESISTANCE



## RESISTENZA AL FUOCO FIRE RESISTANCE

UNI 9175: classe 1M  
EN 1021-1  
EN 1021-2  
BS 5852-1 Match  
BS 5852-1 Cigarette



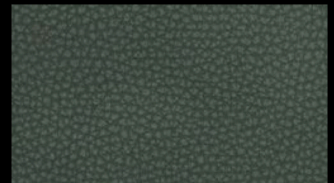
1008



1005



1013



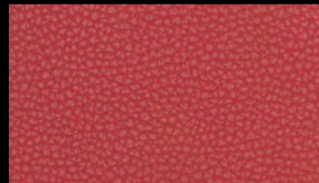
1012



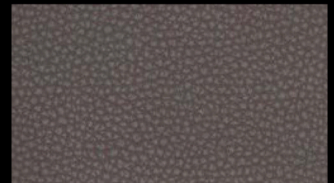
1001



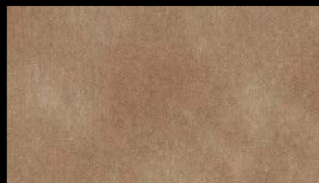
1004



1014



1015



1002



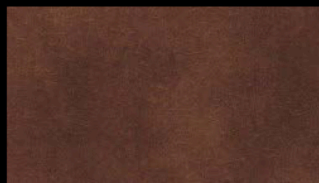
1006



1010



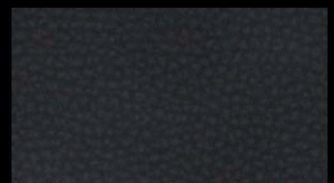
1011



1003



1009



1007